



# Pro Shift Patient Mover

## Sit-to-Stand Transfer Aid

Effective support for promoting mobilisation, independence and patient transfer comfort.



A supportive standing aid that promotes user independence while enabling single-caregiver transfers. Ideal for weight-bearing users who need extra assistance when transferring between seating surfaces. Features ergonomic design elements for both user and carer safety.

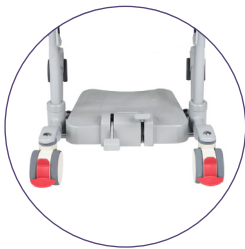
# Pro Shift Patient Mover

## Why Choose the Royale Pro Shift Patient Mover?

- **Enhanced Maneuverability:** Lightweight base design with smooth 10cm castors enables effortless positioning and transport in any care environment.
- **Ergonomic Control:** Dedicated attendee push bar and adjustable foot pedals for leg spread provide caregivers precise control around furniture and fixtures.
- **User Comfort:** Padded support bar and contoured swing-away seat pads ensure comfortable, dignified transfers.
- **Adaptable Design:** Height and angle adjustable knee pad with flexible leg spread accommodates various user needs and environments.
- **Versatile Access:** Adjustable base width enables easy positioning around toilets, commodes, and chairs for seamless transfers.



Padded Lower Knee Support



Locking Rear Castors  
Ergonomic Base Design with Low Profile



Comfortable Swing-Away Seat Pads

## Specifications

	S332019
Overall Width (External)	66cm – 94cm
Overall Width (Internal)	50cm – 78cm
Overall Depth	100cm
Overall Height	104cm
Base Plate Height	10cm
Rear Width	55cm
Knee Pad Measurement (W x H)	43cm x 25cm
Knee Pad Height from Base Plate	20cm – 24cm
Handle Height from Base Plate	90cm
Seat Height from Base Plate (B x T)	56cm x 68cm
Seat Width	58cm
Seat Depth	31cm
Front Castors	10cm
Rear Castors (w/brakes)	10cm
Underbed Clearance	15cm
Attendee Push Handle Height from Floor	104cm
Safe Working Load (SWL)	225kg