

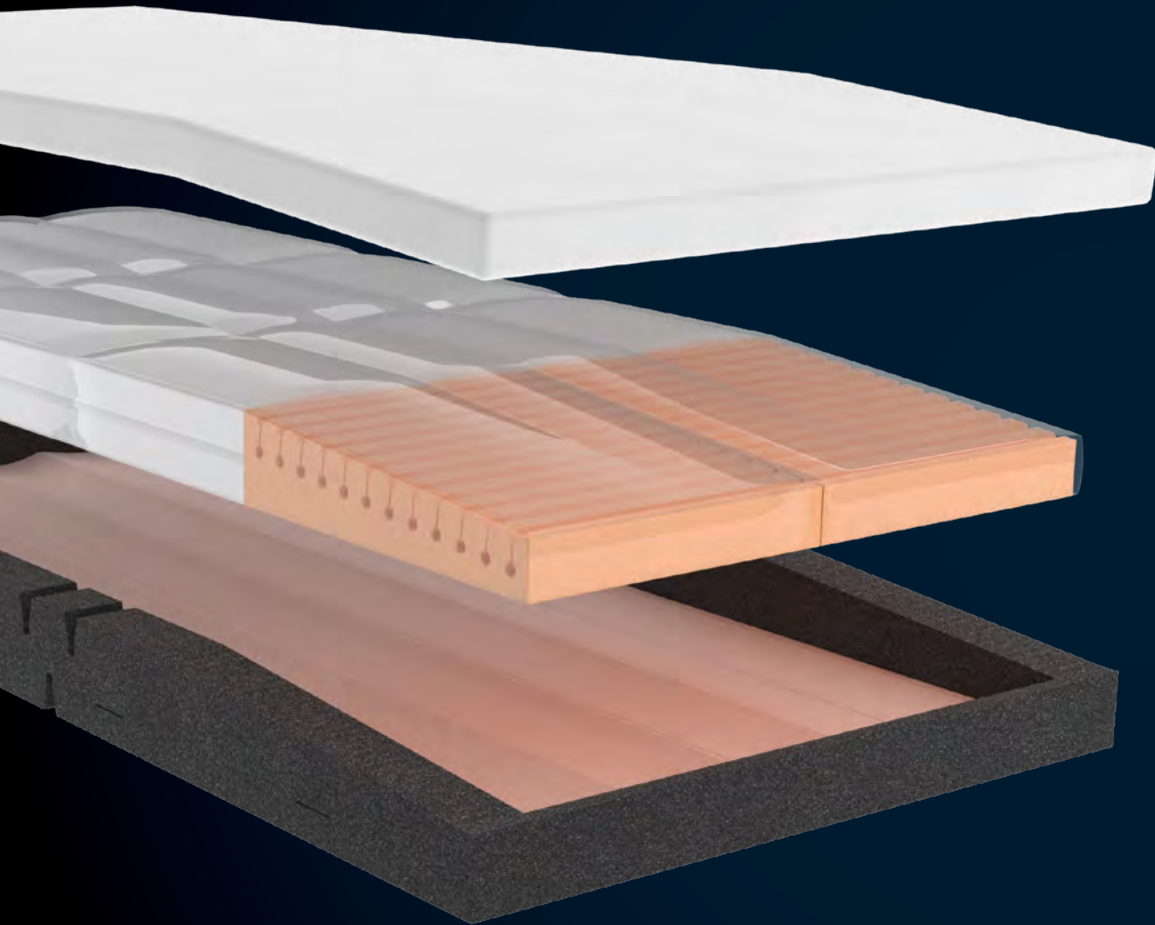


ALAISE

THE REVOLUTION IN PUMPLESS AIR



"The Forté Alaise truly allows for exceptional pressure redistribution, without compromising on stability or function. A seamless and practical combination of air and foam technology ensures maximum comfort and care across all environments."



1. Alaise. The Revolution In Pumpless Air

Alaise (French for comfortable), is the Forté pumpless hybrid air mattress range. Removing the pump from an air mattress changes the therapy from active to reactive. As such, Reactive support surfaces have the capability to change their load distribution properties only in response to an applied load. Reactive support surfaces provide pressure redistribution and pressure-point reduction as opposed to pressure relief provided on an active surface.

2. Full Pressure Redistribution

The goal with any static pressure care support surface is to reduce high pressure-points at any point on the body. Alaise mattresses are extremely effective at reducing peak pressures by always ensuring maximum contact area between the support surface and the body. Interconnected Air cells allow for full body auto-calibration of pressure across any body type and lying position. A Full length and width air system means pressure care is guaranteed in any size support surface.

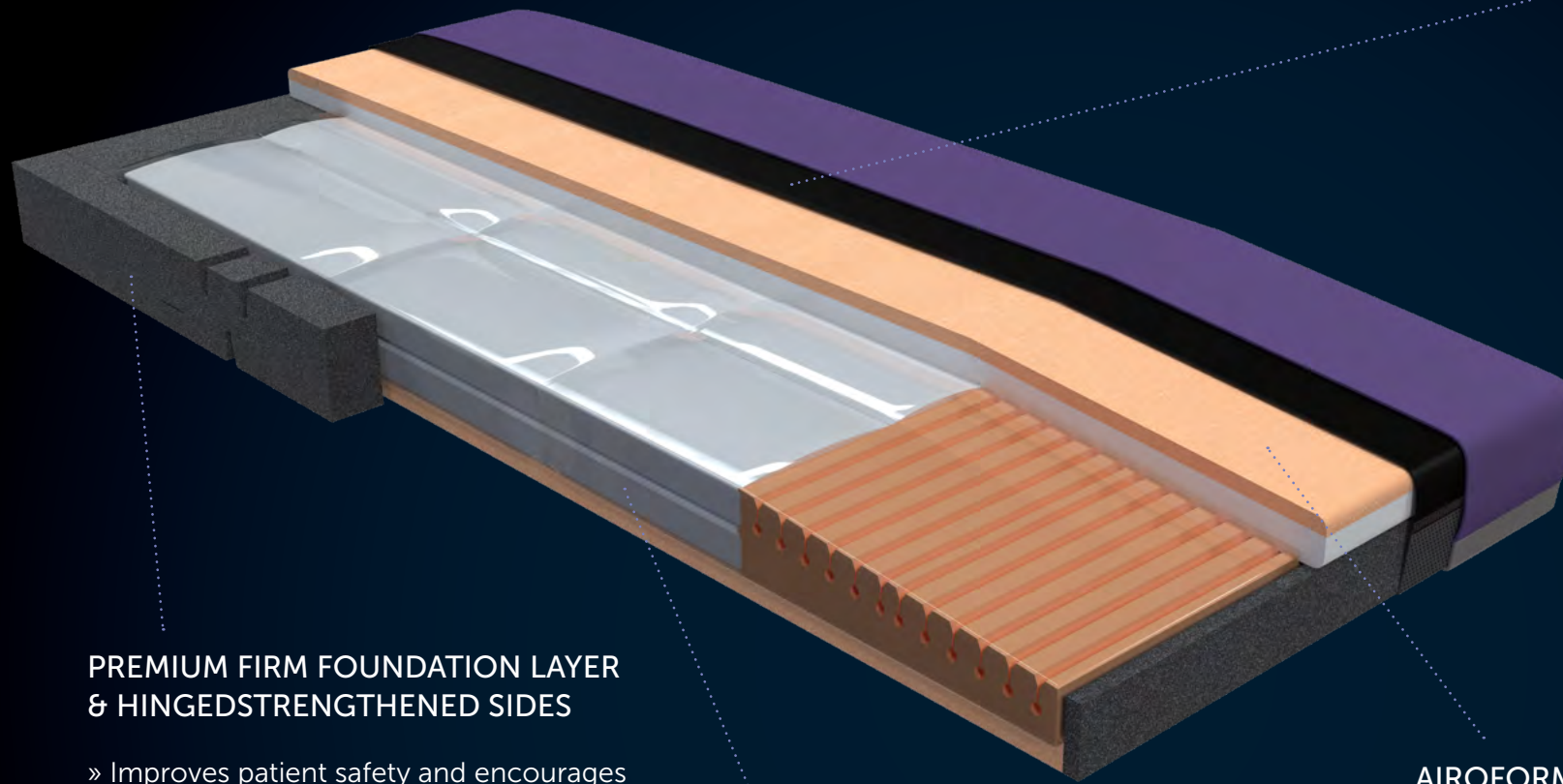
3. Maximum Stability

Challenging the traditional path of pumpless air design, the Alaise employs a unique layout of air-cells to maintain optimal stability throughout the surface. Through a major breakthrough in air cell configuration, preventing air from 'running' side-to-side enables a user to mobilise without fear of instability. The seamless combination of Air and Response. The seamless combination of Air and Response Foam Ultra high rebound technology makes it easier to roll and reposition.



"We have used the Alaise mattress within our client population of people who are in the subacute phase of their rehab post spinal cord injury. We have found the Alaise mattress to be a great option to use when downgrading clients off alternating air mattresses and onto something else in preparation for going home. The feedback from clients has been very positive! Particularly with regards to the mattress being firm enough to maximise function, such as rolling, bed mobility, and comfort, whilst also offering a good level of pressure relief"

– Clare, OT



SUPER SHEAR INNER COVER

- » Low friction, Anti-Shearing Inner cover compartmentalised to segregate the modular regions of the Alaise in turn delivering a series of shear reduction levels
- » Dramatically reduces shearing forces at the patient interface
- » Fine stretch Lycra based material is wrinkle free and conforms to varied bed positions
- » Provides additional protection to the mattress core

PREMIUM FIRM FOUNDATION LAYER & HINGED STRENGTHENED SIDES

- » Improves patient safety and encourages central patient positioning
- » Enables ease of primary patient care & makes patient transfers easier and safer
- » Unique hinge profile sides reduce foam fatigue and allows mattress to easily conform to varied bed positions
- » Provides protection against 'bottoming-out' during transfer, repositioning and whilst in the Inclined/Fowler position
- » Provides exceptional comfort, support for repositioning and patient care
- » Provides protection to air system from bed base

SUPPORT / ANTI-SHEAR RESERVOIR

- » Allows displacement of air from within sacral region to redistribute pressure posterior of the knee
- » The knee pit or popliteal is typically an area of the body that is not in contact with the support surface
- » Accommodates change in user weight distribution over a variety of postural positions

AIROFORM RESPONSE IMMERSION INTERFACE LAYERS

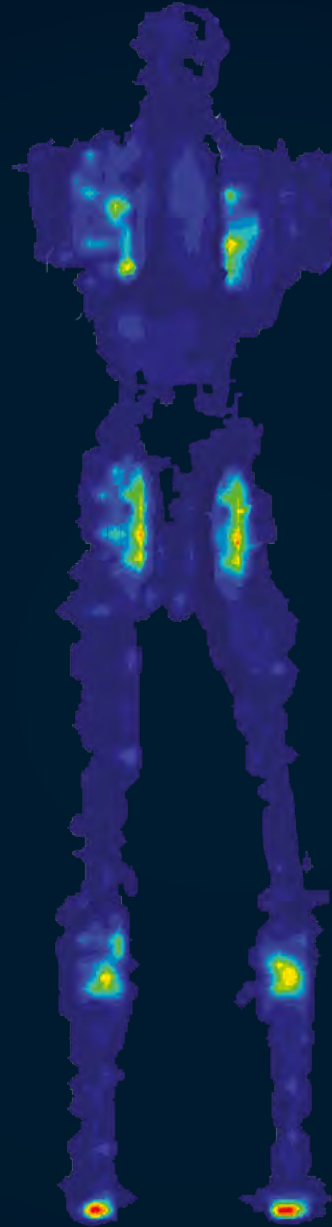
- » High open-cell elasticity for temperate stability and to maximise functionality and patient mobility
- » Maximises Patient contact with Support Surfaces Providing Pressure Redistribution
- » Alleviates localised pressure points
- » Anti-microbial treatment applied to foam maximises longevity and core Micro-Climature
- » Conforms to EPUAP, NPUAP & PPIA Guidelines for quality and comfort
- » Firmness: Unique combination of Soft & Medium

Clinical Pressure Mapping

Pressure Mapping for the Alaise was completed using the RESNA/NPIAP 50th Percentile Male Mannequin. The test dummy is manufactured in such a way that the major bony prominences of the human body are exaggerated, exhibiting peak pressure with no soft tissue.

It would seem an initial PM view of the bony prominences (Occiput, Scapula, Sacrum, Heels etc.) appears excessive for a short interval however, the human body in fact becomes exponentially more vulnerable for these 'at-risk' regions over a longer interval with the "Damage-Spiral Initial Direct Deformation of the skin leading to Internal Inflammatory Response and then Ischemia, "[1] At Forté Healthcare we utilise this Pressure Mapping test, employing the use of the RESNA Mannequin, as an essential tool in our Research & Development, ensuring every customer has a Support Surface performing to its peak. Additionally we can help minimise prevalence of Pressure Injuries.

Please note: Pressure Mapping is a commonly used tool in attaining clinical data on Interface Pressures, however Forté Healthcare acknowledges "it cannot be used to conclude on internal stresses and the stress concentration levels in deep vascularised tissues, particularly muscles." [2] The Pressure Mapping example provided by Forté Healthcare is only intended for use as a clinical aid, "rather than a replacement to clinical judgement." [3]



TEKSCAN PRESSURE MEASUREMENT

System	7.20C
Rows	104
Sensel Area	2.89008cm ²
Micro Second	0
Sensor Type	5400D
Cols	34
Seconds per Frame	0.010319
Units	mmHg

PRESSURE MAPPING PARAMETERS

Bed Surface	Alrick, 2001WMKII Series Bed
Relative Humidity	51%
Ambient Temperature	21°C
Height	178cm
Alrick, 2001WMKII Series Bed	81kg, RESNA/NPIAP 50th percentile male mannequin
Duration	Pressure Mapping was captured after 6 hours of subject laying upon support surface

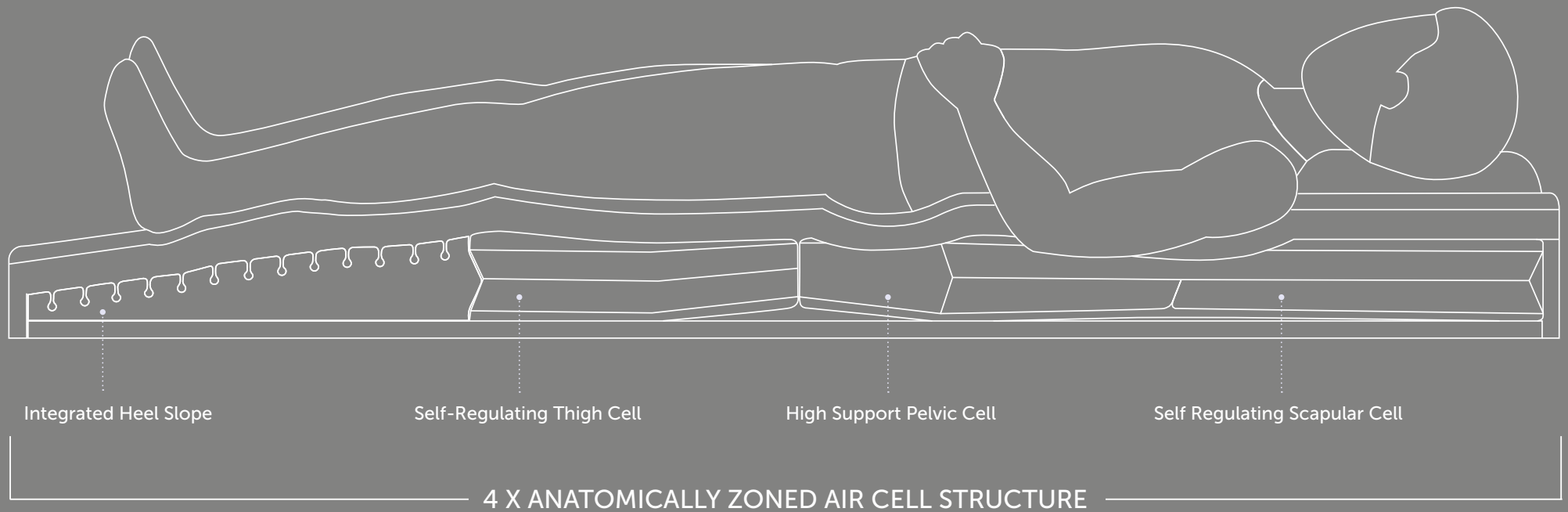
[1] Gefen A. The future of pressure ulcer prevention is here: Detecting and targeting inflammation early. EWMA Journal 2018 19(2)

[2] A. Gefen & J. Levine (2007) The false premise in measuring body-support interface pressures for preventing serious pressure ulcers, Journal of Medical Engineering & Technology, 31:5, 375-380, DOI: 10.1080/03091900601165256

[3] Dunk AM & Gardner A (2016) Body shape: a predictor for pressure injury risk, Wound Practice and Research, 24:2, 92-98, ISSN 2202-9729

Anatomically Calibrated air cell positioning

One Major goal with any static pressure care support surface is to reduce high-pressure points at any section of the body. "Reducing peak pressure can be achieved by ensuring maximum contact area between the support surface and the body." [4] The unique anatomical layout and structure of air cells ensure redistribution is perfected from head to foot.



[4] Lustig M, Gefen A. Computational studies of the biomechanical efficacy of a minimum tissue deformation mattress in protecting from sacral pressure ulcers in a supine position. *Int Wound J.* 2021;1-10

	SINGLE	LONG SINGLE	KING SINGLE	LONG KING SINGLE	EXTRA WIDE	EXTRA WIDE LONG
						
Size (mm)	1980x880x185	2030x880x185	1980x1050x185	2030x1050x185	1980x1150x185	2030x1150x185
Product Code	ALS1000	ALSL1000	ALKS1000	ALKSL1000	ALEW1000	ALEWL1000
	DOUBLE	LONG DOUBLE	QUEEN	LONG QUEEN	KING	LONG KING
						
Size (mm)	1980x1350x185	2030x1350x185	1980x1530x185	2030x1530x185	1980x1850x185	2030x1850x185
Product Code	ALD1000	ALDL1000	ALQ1000	ALQL1000	ALK1000	ALKL1000

PRODUCT RATINGS		PRODUCT	
SHEAR & FRICTION	0 5	OUTER COVER	Premiflex Ultra
REPOSITIONING	0 5	WARRANTY	5 Year Foam Core 4 Year Cover 5 Year Air Cell
INFECTION CONTROL	0 5		THERAPUTIC WEIGHT LOADING
FIRMNESS	0 5	APPLICATIONS	» Hospital Wards » Aged Care » Palliative Care » Homecare
MOISTURE & MICROCLIMATE	0 5		CAN BE CUSTOMISED TO FIT ANY BED PLATFORM
PERFORMANCE & LONGEVITY	0 5		
MOBILITY & FUNCTION	0 5		
PRESSURE CARE RATING	HIGH - VERY HIGH Risk		



100% Australian Owned with an unmatched quality and service you can rely on

Forte Healthcare is a leading Australian company dedicated to excellence in the design and manufacture of Patient Support Surfaces, Medical Mattresses and Pressure Care Products. Originally founded in 1995, we remain a family owned and operated company in our 2nd generation of management, with a continued commitment to quality and exceptional service.

Fore Healthcare has established a reputation among healthcare professionals as the Australian leader in the medical mattress industry, supported by decades of knowledge and expertise. We are trusted to supply major Government divisions including NSW Health, NT Health, QLD Health, SA Health, TAS Health, and the Victorian State Wide Equipment Program.

A special focus on Pressure Injury Prevention

Pressure Injuries are life-threatening, painful, traumatic, and very costly.

Forté medical support surfaces are designed and manufactured with specific features that reduce and prevent the risk of Pressure Injury incidence.

Forté Healthcare maintains a close, collaborative relationship with internationally recognised clinicians specialising in Pressure Injury Prevention. Together with an unbiased and in-depth understanding of raw material technologies, Forté Healthcare is an organisation that enables the unique application of research and findings to Medical Mattress development and production. This creates unique innovations that improve patient outcomes and enhance best-practice nursing.





All mattresses are made by Forté Healthcare in Armidale NSW
in accordance with all Australian manufacturing and clinical standards.

ALAISE. THE REVOLUTION IN PUMPLESS AIR



www.fortehealthcare.com.au | 1300 73 11 63 | sales@fortehealthcare.com.au

© Copyright 2023 Forté Healthcare AL1 V-3.0 - 03/23