

## Sizing Options



### Specifications

	Small	Medium	Large
 Overall Height:	1060mm	1060mm	1060mm
 Overall Width:	750mm	750mm	820mm
 Armrest Height (from floor):	620mm	640mm	640mm
 Seat Height (from floor):	480mm	520mm	520mm
 Seat Width (measured on sitting area):	500mm	500mm	595mm
 Seat Depth (measured on sitting area):	500mm	500mm	530mm
 Backrest Height (dependent on air bladder inflation):	680mm	720mm	740mm
 Safe Working Load:	160kg	160kg	160kg
 Castor Wheel Diameter:	50mm	50mm	50mm

### Empowering Australians through mobility and independence

ILS is a trusted Australian provider of assistive technology. We provide a wide range of equipment, with specialist teams who offer clinically led advice, ensuring equipment supports the best possible outcomes for our clients.

### Quality Assurance

We are dedicated to providing the highest quality in assistive technology equipment, which is why all our Royale Medical products are registered with the Therapeutic Goods Administration (TGA) and certified to the Australian/New Zealand Standard (AS/NZS).

TGA Registration (ARTG: 388719)  
 AS/NZS 4688.2-2000 (R2016)  
 AS/NZS 4688.3-2000 (R2016)  
 AS/NZS 4688.4-2000 (R2016)

### Warranty

The Royale Pressure Relieving Air Lift Chair has a warranty of 2 years. This includes:

1. Electric components (transformer, hand control, motor, and all cables)
2. Steel lift/recline mechanism
3. Timber frame (structural & workmanship)

## AIR PRESSURE RELIEVING LIFT CHAIR

Maximum comfort for those with a high risk of pressure injuries.



PDT002-1122

# AIR PRESSURE RELIEVING LIFT CHAIR

## Comfort & Care

Exclusive to Independent Living Specialists, the Royale Air Pressure Relieving Lift Chair is designed to accommodate extended seating periods.

It has a unique air bladder system within the headrest, lumbar and seat cushions and is upholstered with a medical-grade fabric designed to help reduce the risk of pressure injuries.

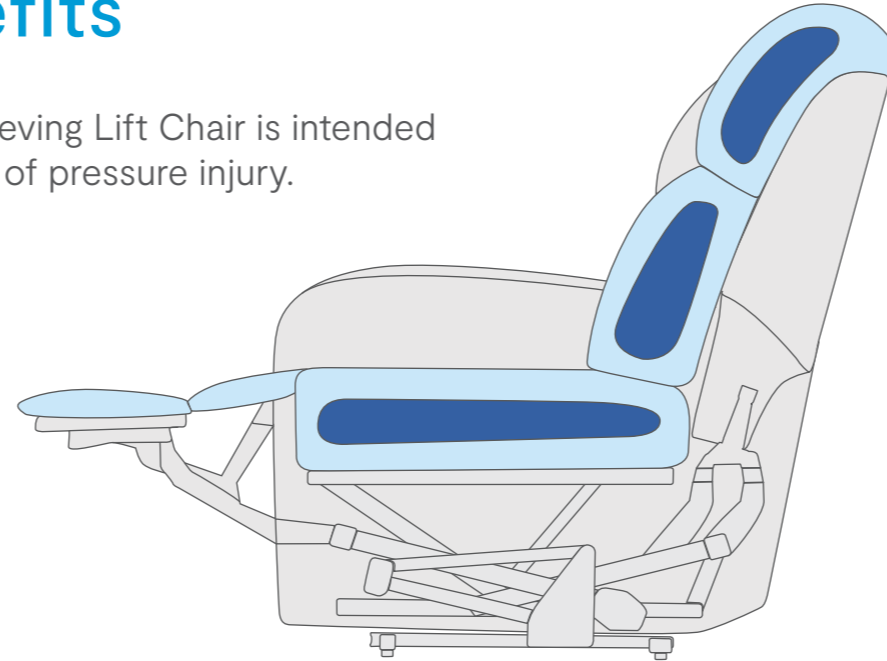
The soft vertical lift action enables safe, easy movement and transfer out of the chair.



## Clinical Benefits

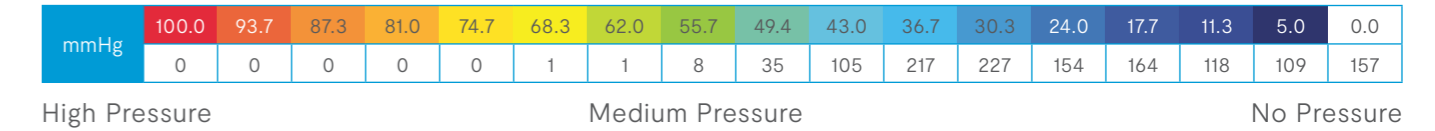
The Royale Air Pressure Relieving Lift Chair is intended for use by individuals at risk of pressure injury.

- Adjustable Air Bladder Inserts
- Padded Foam Inserts



## Pressure Mapping

The Royale Air Pressure Relieving Lift Chair is pressure mapped in 3 different positions commonly used in order to demonstrate how different seating orientations can impact the peak pressure points on the user.



## Additional Features

- Twin motor allows for fully independent backrest and footrest adjustments to allow for optimal positioning.
- Backup power supply for peace of mind.
- 2-year warranty on all electrical and structural components.
- Includes a set of four large swivel castors that can be installed onto the chair for ease of movement on any surface. The rear castors have brakes on them for added safety.
- Durable, multi-directional stretch PU upholstery is antibacterial, waterproof and fire resistant.
- Hand control with back lit buttons and USB port to charge electrical devices, which can be stored in the large pockets on either side of the chair.

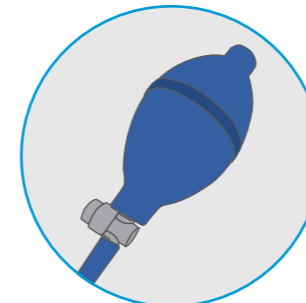


## Adjustable Air Bladder System & Foam Inserts

The combination of foam and four adjustable air bladder inserts across the head, backrest, seat and leg rest sections increases the users immersion within the chair.

This assists to minimise the peak pressures along the key high-risk areas of the users body – occiput (back of head), shoulder blades, sacrum, ischial tuberosities (IT's) and heels.

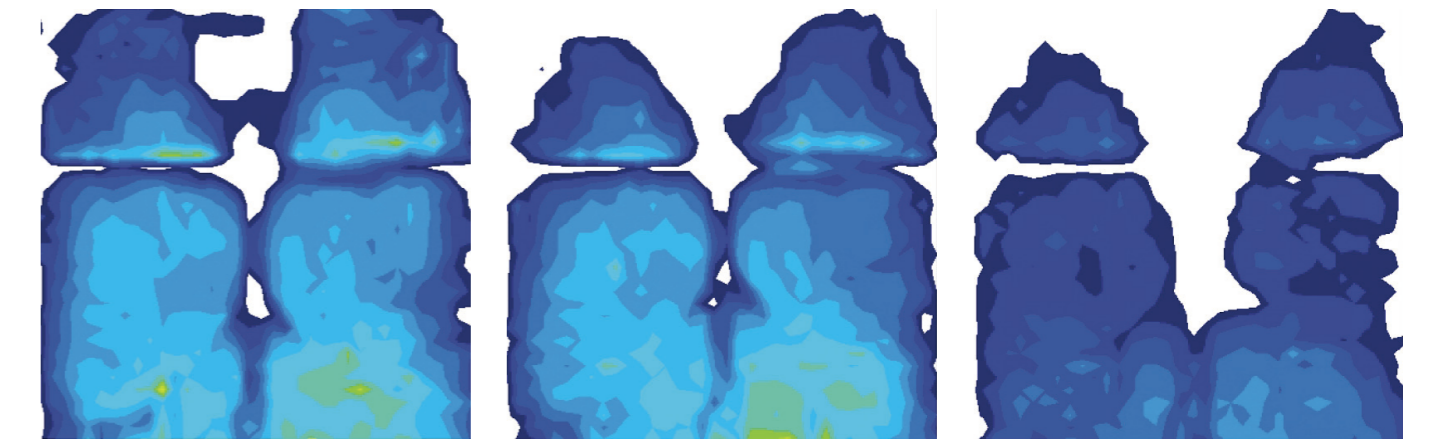
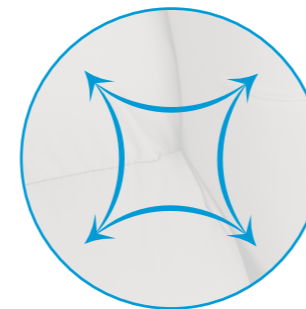
Integrated pumps allow pressure adjustments according to the needs of the user and can be neatly tucked away.



## Four Way Stretch Fabric

Soft and breathable four way stretch fabric is specially designed to reduce the risk of pressure injuries. This specialised fabric assists with reducing sheer forces – a known contributor to the development of pressure injuries. This fabric covers all contact areas of the chair.

Vapour permeable fabric allows vapour to pass through the upholstery, whilst preventing other fluids from easily passing through. The ability for vapour to be removed from underneath the user is important, as moisture and humidity is also a known contributor to the development of pressure injuries.



### Neutral or Sitting Position

Average pressure	29.5mmHg
Peak Pressure	68.7mmHg
Contact Area	284.8cm <sup>2</sup>

### Backrest Upright & Legrest Fully Raised

Average pressure	28.7mmHg
Peak Pressure	64.3mmHg
Contact Area	255.3cm <sup>2</sup>

### Backrest Reclined & Legrest Fully Raised

Average pressure	16.3mmHg
Peak Pressure	36.8mmHg
Contact Area	219.5cm <sup>2</sup>

The test subject used for the pressure mapping has a weight of 107.2kg person and a height of 177cm.